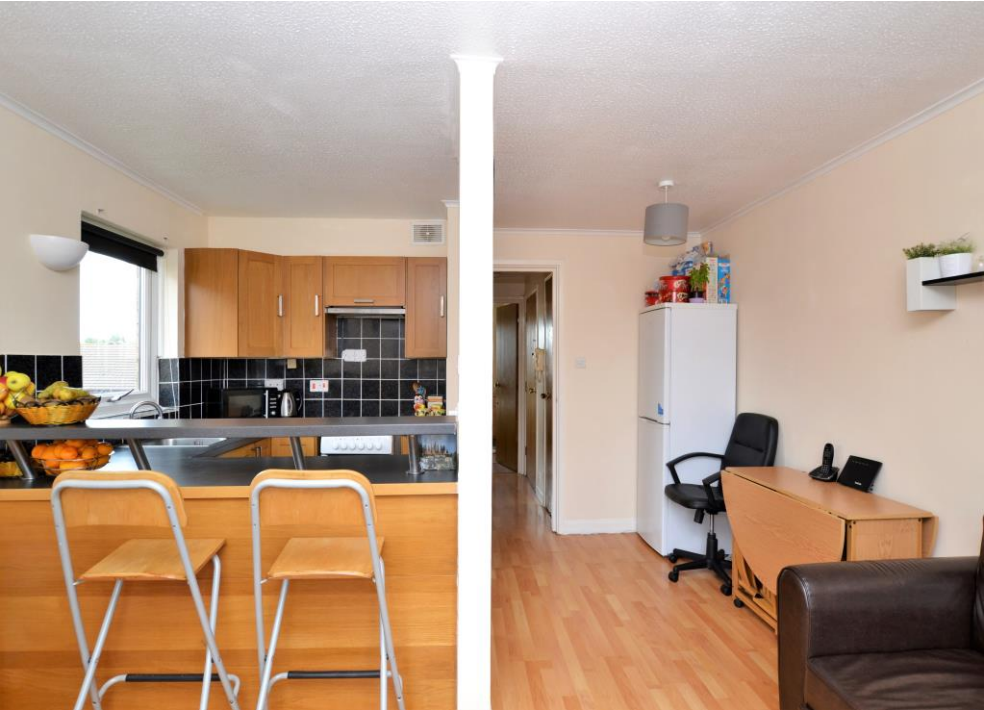


FOLKLANDS



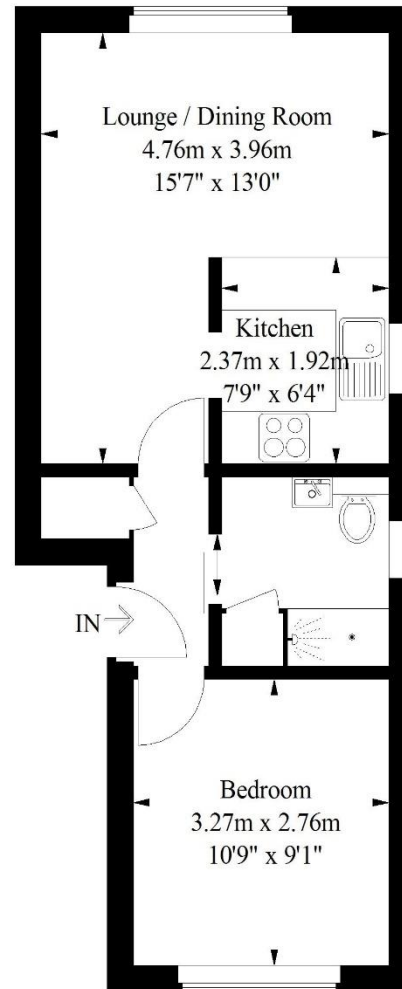
GOODHEW ROAD, ADDISCOMBE
GUIDE PRICE £200,000





Goodhew Road, Addiscombe

Approximate Gross Internal Area
37 sq m / 398 sq ft



Second Floor

Illustration for identification purposes only,
measurements are approximate, not to scale.
FloorplansUsketch.com © 2018 (ID 451953)

INFO@FOLKLANDS.COM - 020 8686 0002

362 BRIGHTON ROAD - SOUTH CROYDON - CR2 6AL

- ❖ EPC EER D
- ❖ TOP FLOOR ONE BEDROOM APARTMENT
- ❖ ACCESS TO LOFT SPACE
- ❖ FULLY DOUBLE GLAZED
- ❖ 0.2 MILES FROM THE LOCAL TRAM STOP
- ❖ ALLOCATED PARKING BAY
- ❖ LARGE COMMUNAL GARDENS
- ❖ WELL PRESENTED THROUGHOUT
- ❖ QUIET RESIDENTIAL LOCATION
- ❖ PERFECT FIRST TIME BUY

A well presented one double bedroom top floor purpose built apartment situated within this quiet cul-de-sac setting, conveniently located only 0.2 miles from the local tram stop and 0.7 miles from Norwood Junction train station.

This bright & airy apartment enjoys good decor throughout, benefits from having access to ample loft storage space, is fully double glazed, boasts an allocated off street parking space, and benefits from access to a large communal garden.

The accommodation comprises one double bedroom, a three piece shower room, a large hall cupboard, an open plan lounge/ dining room, and a modern fitted kitchen with breakfast bar.

Furthermore, this property sits moments from the open green spaces of Brickfields Meadow and a short walk to a wide range of local shops and amenities.

